

# **The K Desktop Environment (KDE)**

# We Shall be Covering ...

- Desktop environment
- The KDE Desktop
- Control Center
- Konqueror
- Help Center

# The Desktop Environment

- A common graphical user interface and platform
- A collection of X clients (programs) working together
- Similar look and feel
- Facilitates inter-process communication and passing of data
- Drag-and-drop, cut-and-paste between processes and applications

# The Desktop Environment

Two commonly used ones:

- GNOME – default desktop for many popular Linux distributions ([www.gnome.org](http://www.gnome.org))
- KDE – longer history than GNOME, used on many Linux and non-Linux systems ([www.kde.org](http://www.kde.org) )

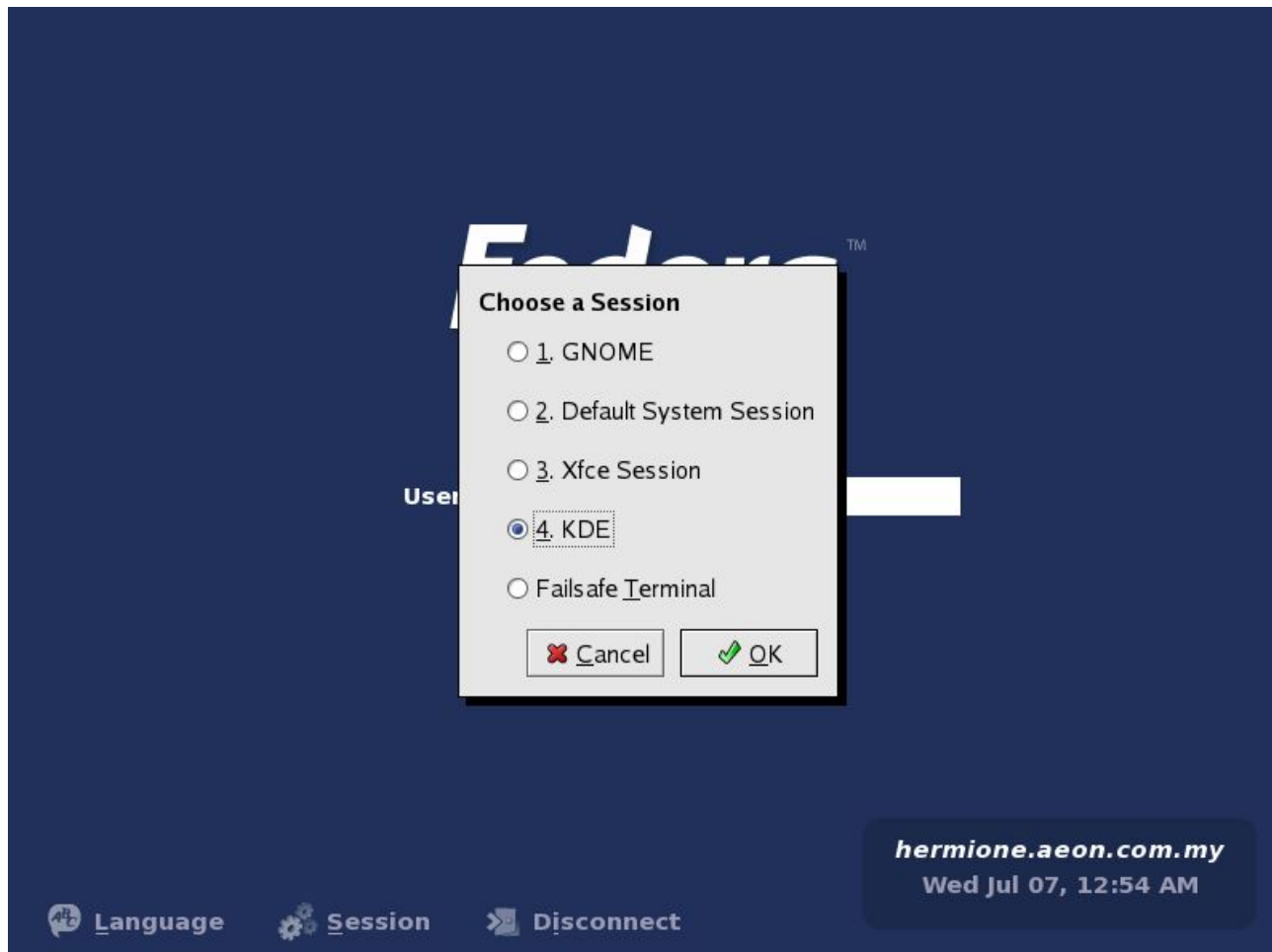
# The KDE Desktop

- An alternative to GNOME, widely used in Linux and other OSS platforms
- Many Linux systems support both (only one can be used at any one time)
- KDE applications can run in GNOME and vice versa if the graphic libraries required by each of these desktop environments are available

# The KDE Desktop

To switch to KDE use:

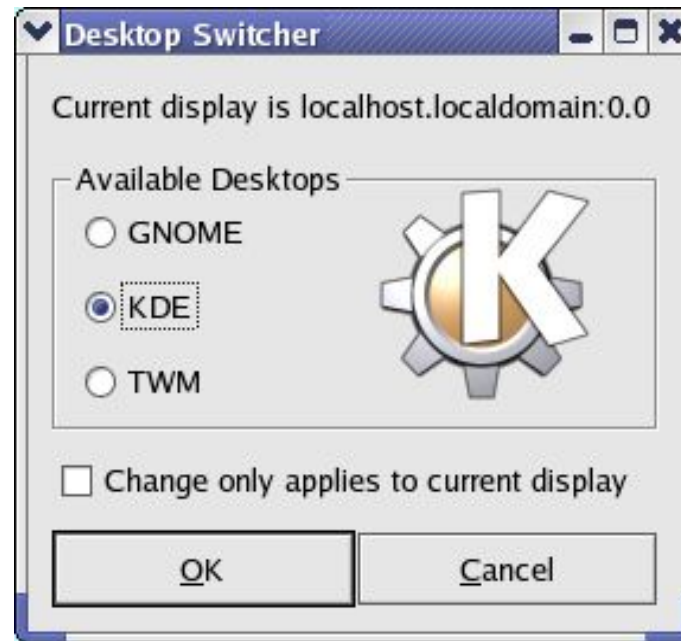
- At the graphical login screen, click on Session (at the bottom) and select KDE



# The KDE Desktop

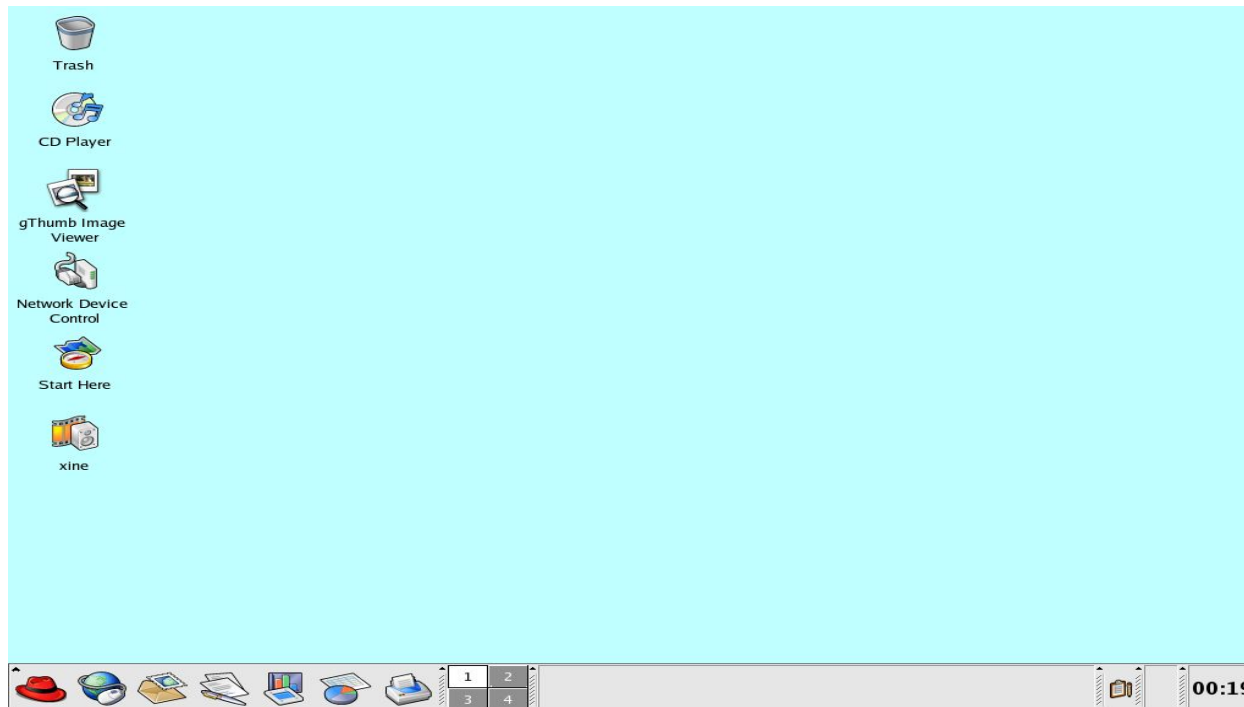
Or use a desktop switching program, e.g. for Fedora/Red Hat,

- Main Menu --> System Settings --> More System Settings --> Desktop Switching Tool



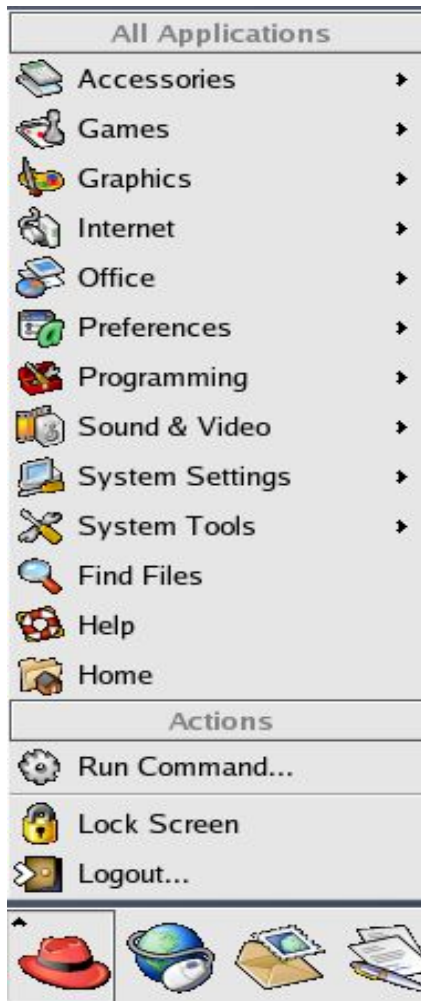
# The KDE Desktop

- KDE has many similarities as well as some differences with the GNOME desktop
- KDE makes use of the Main Menu, Panel and the desktop too
- Some differences in handling the placement of icons on the desktop and panel





# The KDE Desktop



Entries in the Main Menu may not be identical

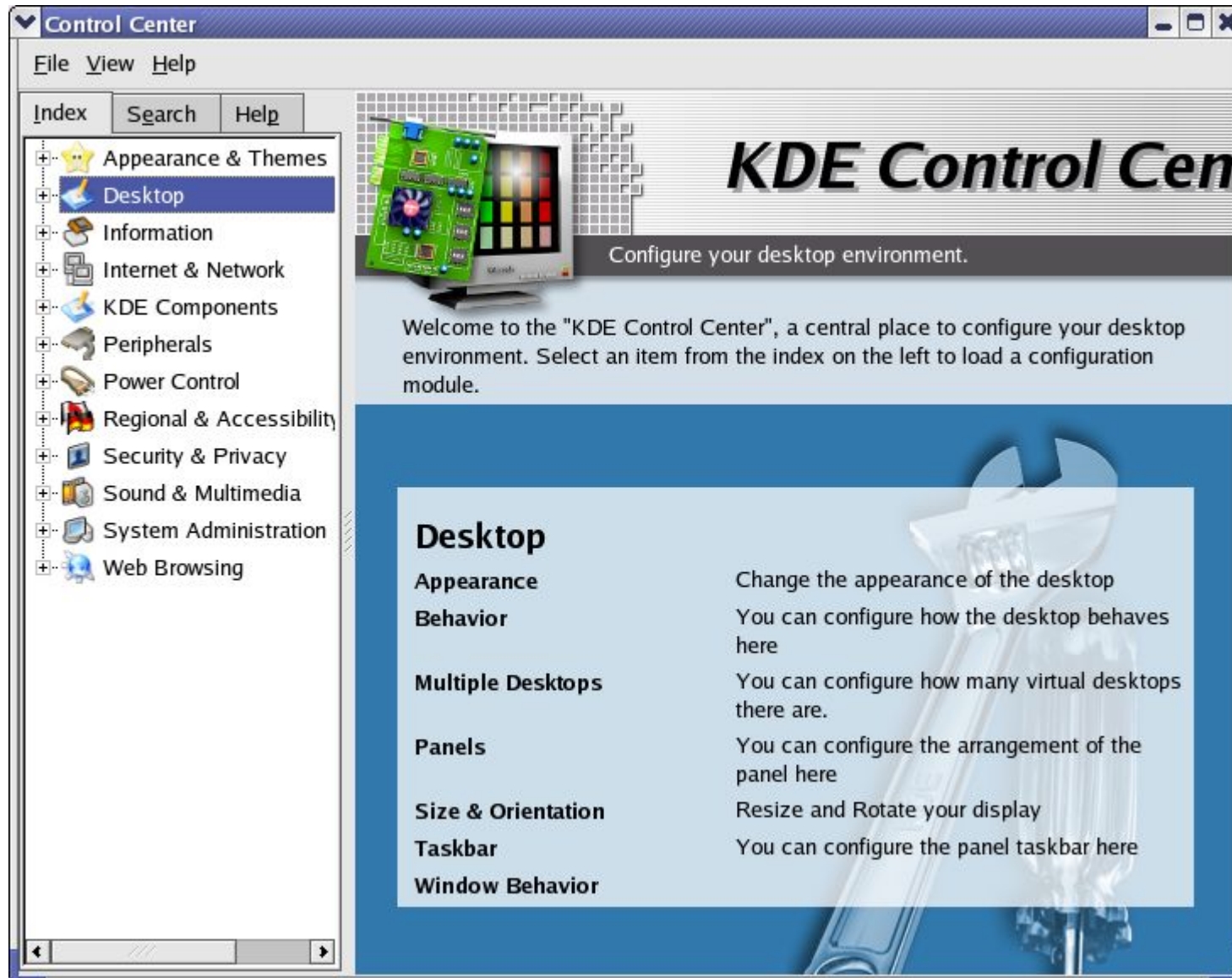


Right-clicking an icon brings up different options

# Control Center

- A central place where all the Desktop and system configuration can be set and viewed
  - Main Menu --> Control Center
- To configure a particular setting, open up the section it is under and select the item to configure
- For example, to change the background colour, select,
  - Appearance & Themes --> Background

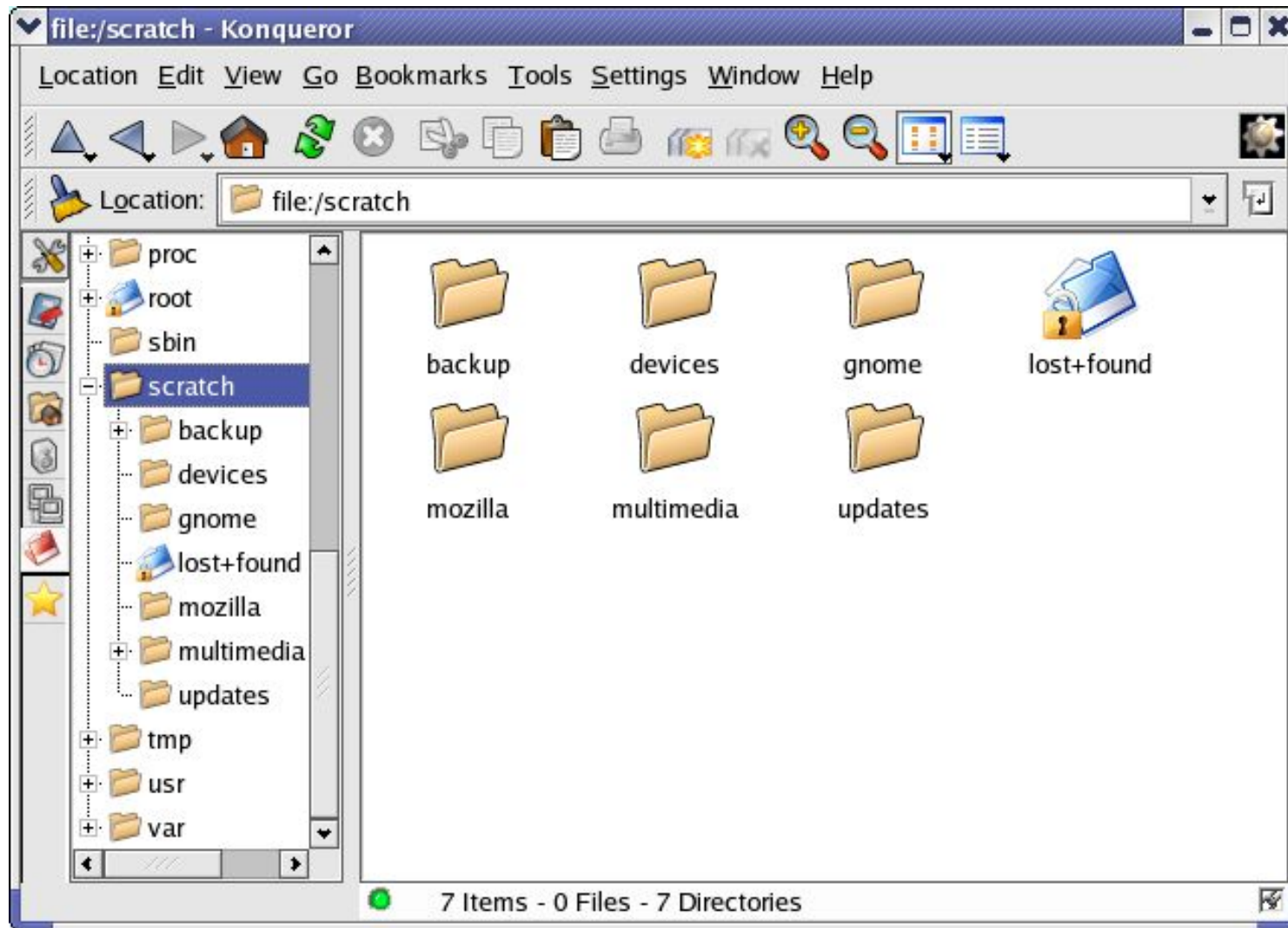
# Control Center



# Konqueror

- Standards-compliant web browser and default file manager for KDE
- Navigate filesystem as you would the WWW
- Provides all the normal file manager functionalities:
  - navigation of the filesystem
  - file/folder copying, renaming, deletion creation
  - application launching
- Able to display graphic image files and generate an image gallery web page from them.

# Konqueror



## Konqueror File Manager

# Konqueror

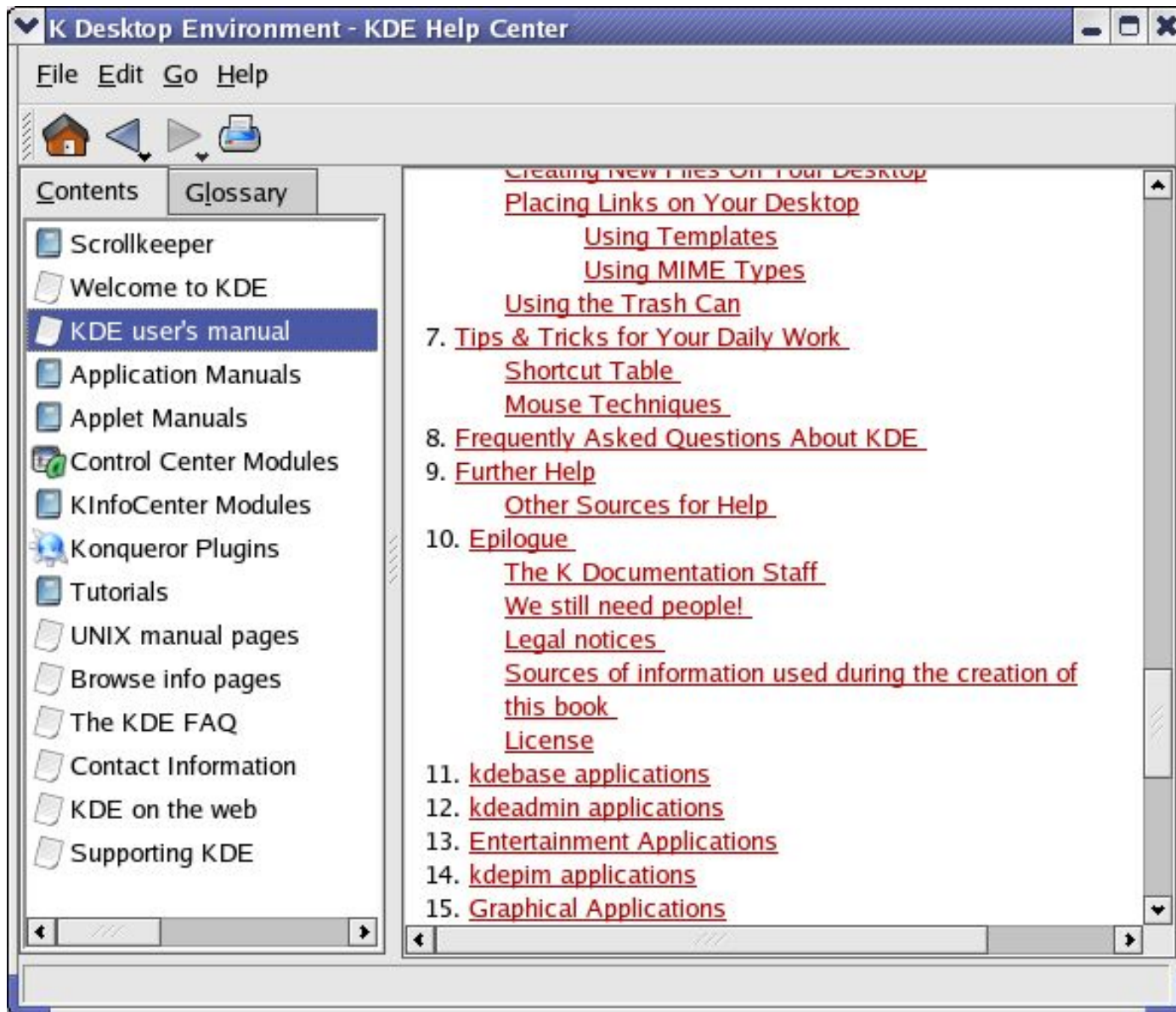


## Konqueror Web Browser

# Help Center

- Extensive KDE online documentation – the Help Center, invoke by,
  - Main Menu --> Help
- Covers the graphical desktop usage, configuration as well as the KDE applets and applications
- Standard Unix/Linux manual and info pages can be accessed from here too.

# Help Center





**End**