

Chapter 2

Using the Desktop

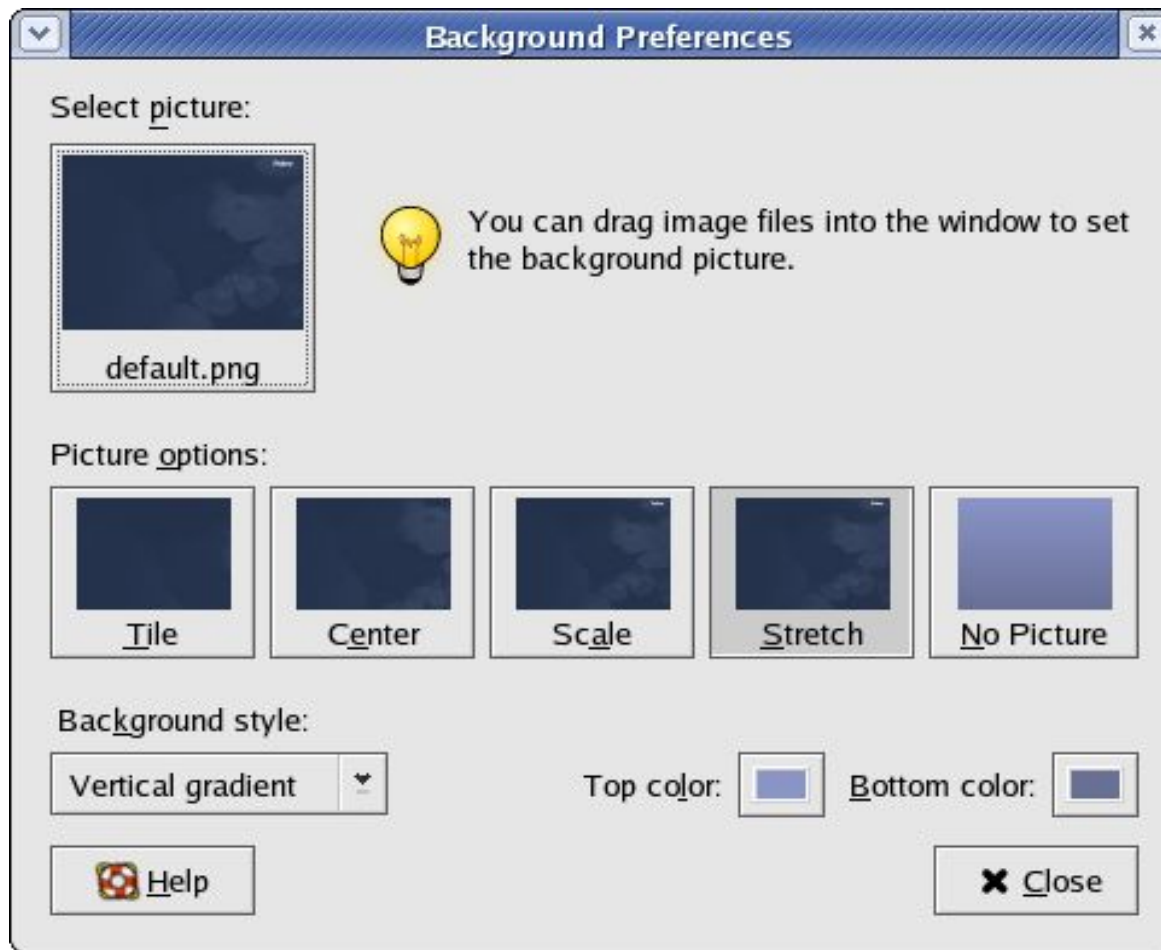
We Shall be Covering ...

- Basic Desktop customisation
- Running applications
- Configuring the Panel
- Creating launchers
- Setting the date and time

Desktop Customisation

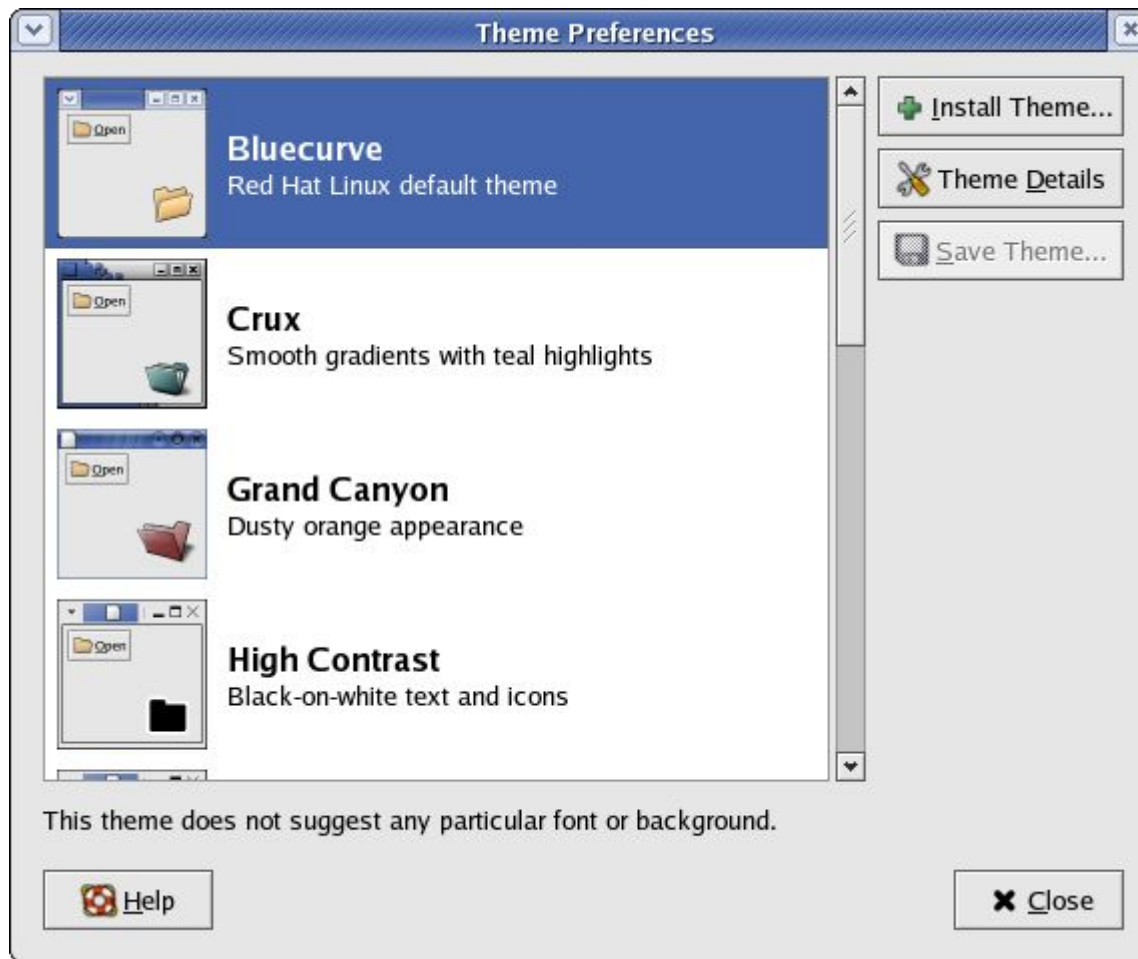
- To invoke:
 - Main Menu --> Preferences
- Background
- Theme
- Fonts
- Menu and toolbars

Desktop Background



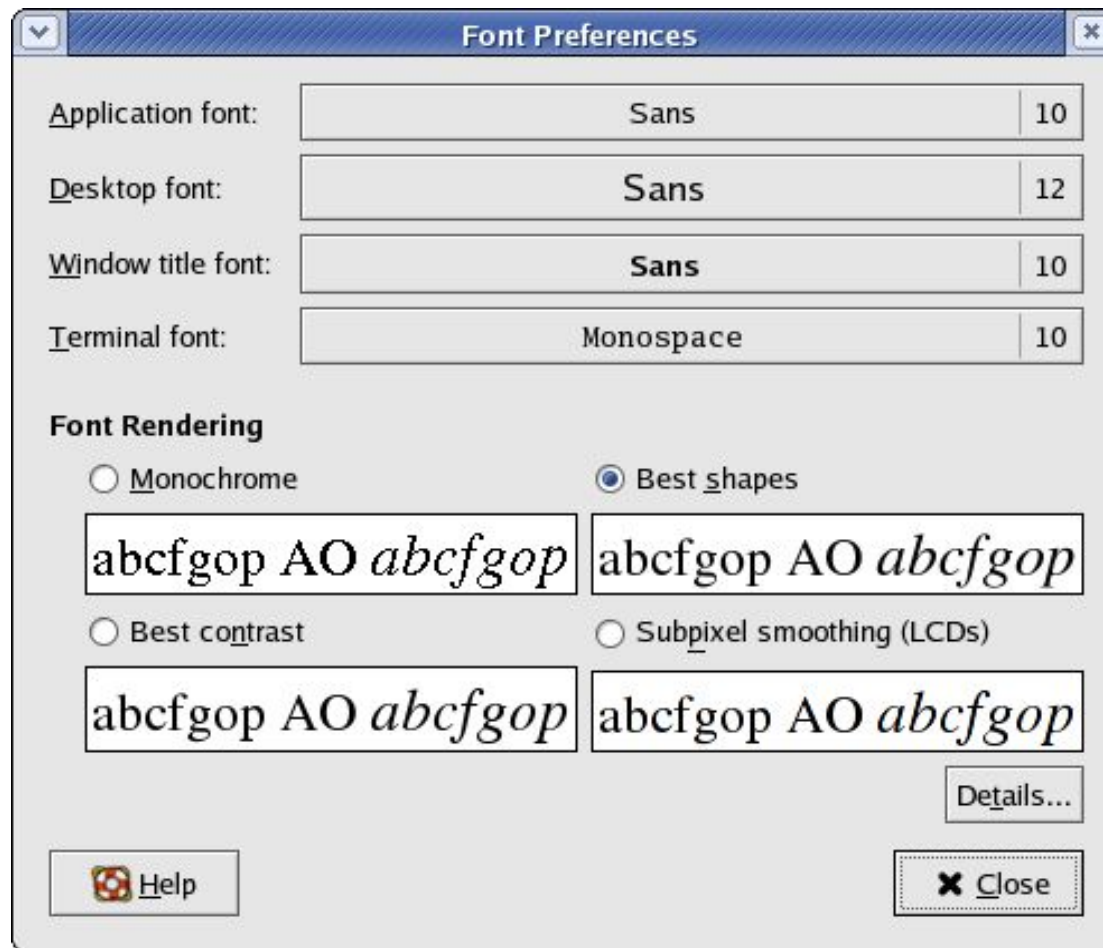
- Main Menu --> Preferences --> Background
- Click on “Select picture”
- Choose image

Desktop Theme



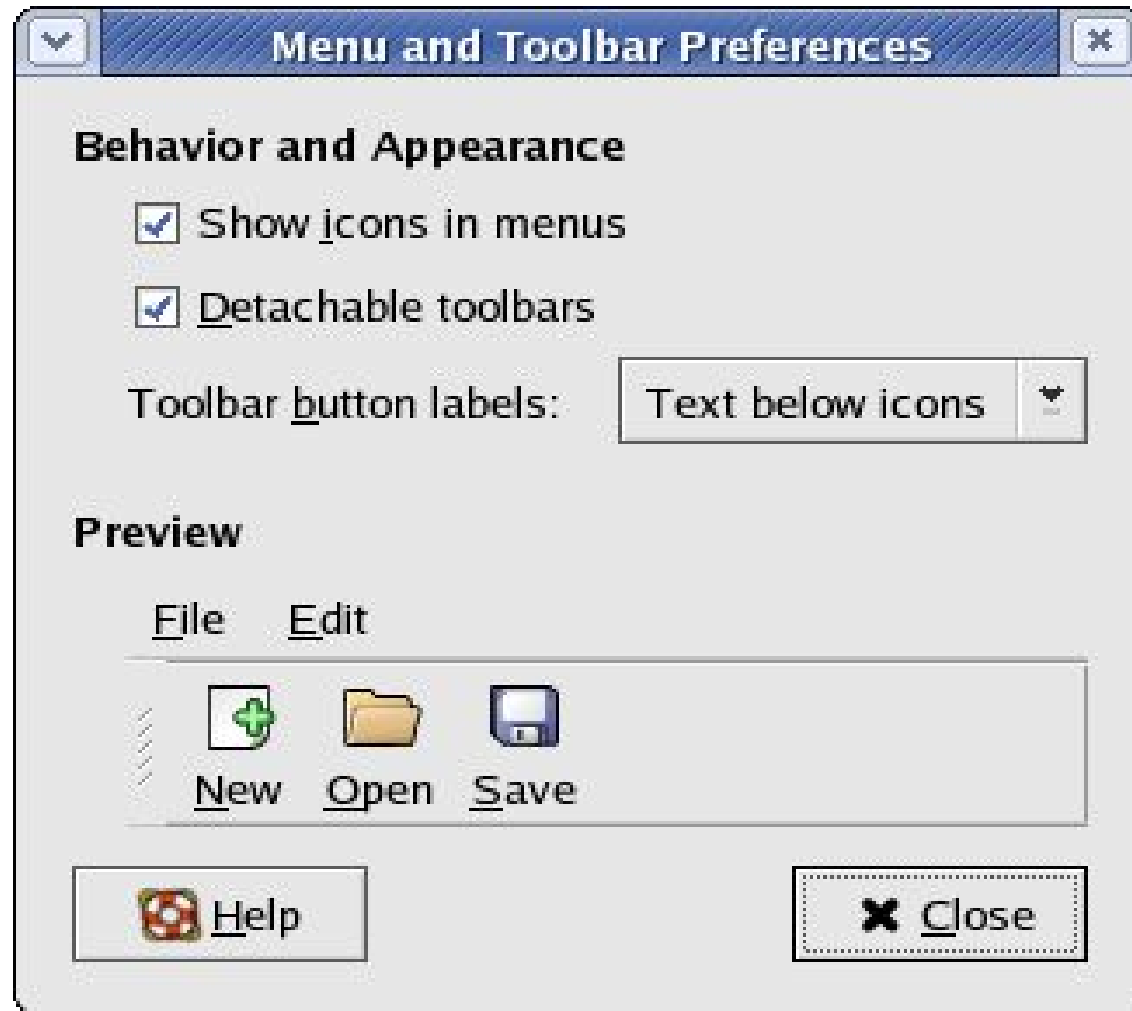
- Main Menu --> Preferences --> Theme
- Click on desired theme

Desktop Fonts



- Main Menu --> Preferences --> Font
- For each category to change, click on the space listing the font

Desktop Menu and Toolbars



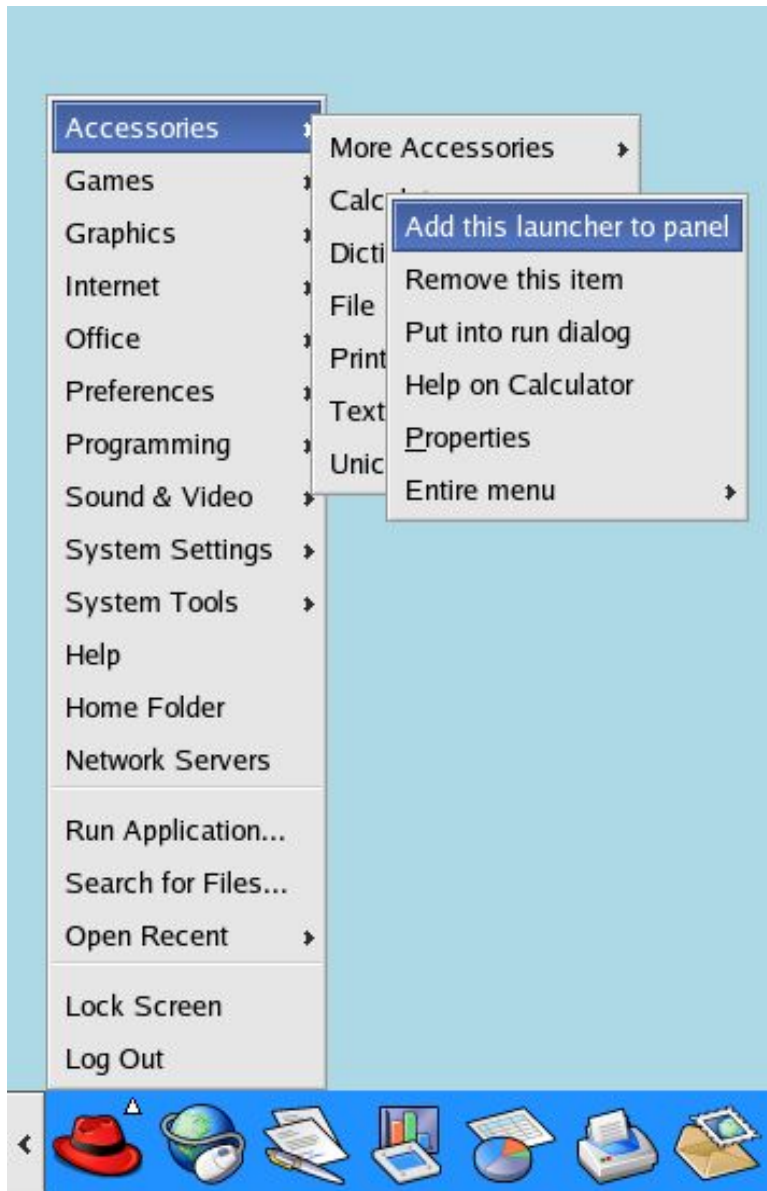
- Main Menu --> Preferences --> Menu & Toolbars

Running Applications

Applications can be run from:

- Main Menu
 - Open Main Menu, select application
- Panel
 - Place application icon on Panel (if not already there)
 - Click on application icon
- Desktop proper
 - Place application icon on Desktop (if not already there)
 - Double click on application icon on Desktop

Add Application to Panel



- Open Main Menu
- **Right**-click on selected item
- Click on selection “Add this launcher to panel”

Add Application to Desktop

- Open Main Menu
- Add application to Panel
- Drag application icon on Panel to Desktop

Drag application icon to Desktop



Place Applet on Panel

- Move mouse to empty space on Panel
- Right-click on mouse
- Select “Add to Panel”
- From sub-menu select applet to place. e.g. to add “sticky notes” applet,

Add to Panel --> Accessories --> Sticky Notes

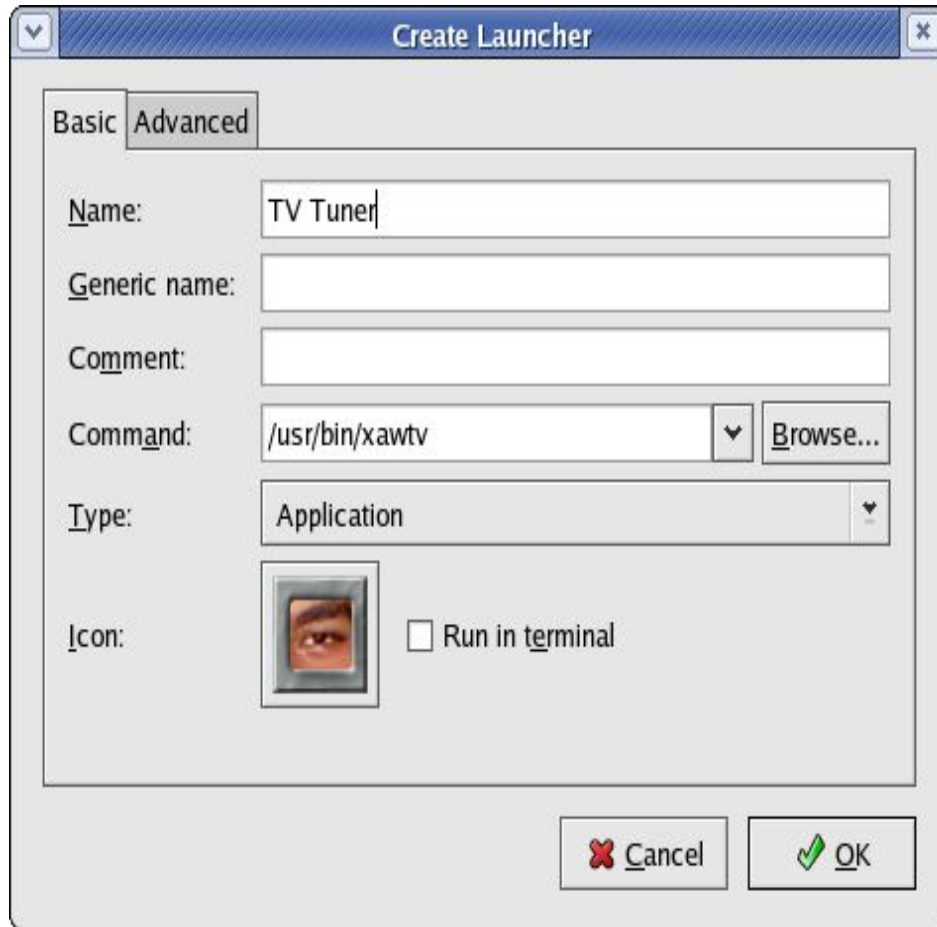
- To remove, applet, right-click on it, select “Remove from Panel”

Configuring the Panel



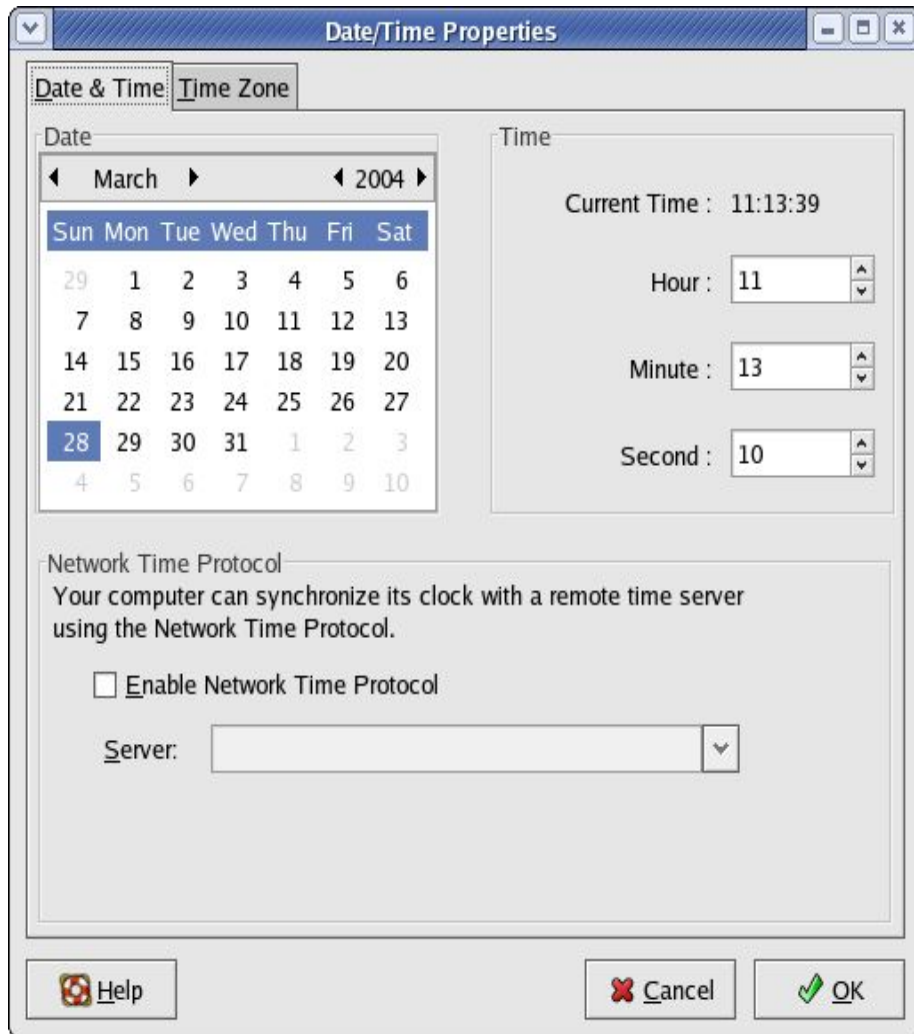
- Right-click on Panel
- Select Properties
- General properties
- Background properties

Creating a Launcher



- Right-click on empty area on Desktop
- Select the item "Create Launcher"
- Enter the Name and the Command to run (you will need to know the name and location of the program to run)
- Select an icon for it by clicking on the icon button (optional)

Date and Time



- Important to set correct date and time
- Main Menu
 - > System Settings
 - > Date & Timeor right-click on clock (time) applet display on Panel and select Adjust Date & Time
- Appearance of desktop clock can be changed

End of Chapter 2